

VEKTA V1707R



Key Features

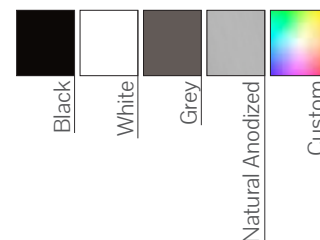
- Complies with relevant Australian Standards
- Even light distribution
- Supplied complete with mounting components
- IP65 rated LED strip available on request

Compliance



*Cyanosis compliant on request

Colour Options



Code

Example:

V1707R-R059030ODDO10-2400

Product Code	Mounting	Power #	CRI	CCT	Optics	Driver	Finish	Length
V1707R	R - Recessed Trim	05 - 4.8 W/m (338 lm/m) 10 - 9.6 W/m (676 lm/m) 15 - 14.4 W/m (1014 lm/m)	90 - CRI>90 95 - CRI>95	30 - 3000K 35 - 3500K 40 - 4000K 50 - 5000K 65 - 6500K TW - 2700-6500K RGB RGBW4K RGBW3K	OD - Opal	DO - Non-Dim DA - Dali-Dim SW - Switch-Dim CA - Casambi T2 - Tunable White	10 - Black 11 - White 75 - Grey 79 - Anodised CU - Custom	- xxxx mm

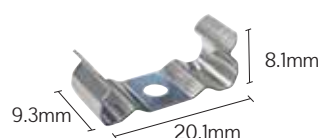
Luminous flux figures based on Opal, 4000K, CRI>90 version

Mounting

Recessed Trim (R)



Mounting Clip



Dimensions

