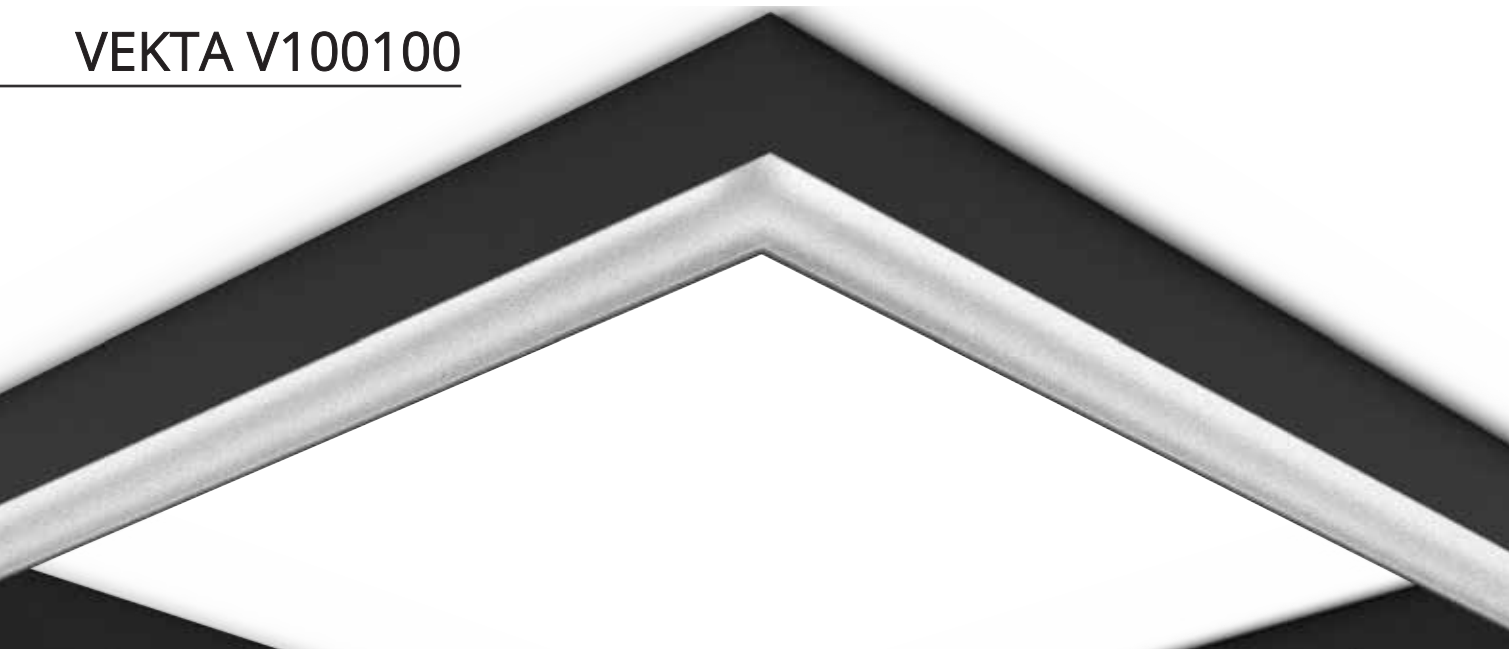


# VEKTA V100100



## Key Features

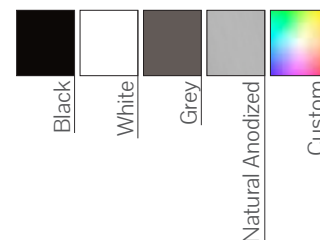
- Even light distribution
- Complies with relevant Australian Standards
- Diverse possibilities
- SELV LED Engine
- Screwless end caps (On Request)
- Emergency Options (On Request)
- Manufactured in Australia
- IP55 (On Request)

## Compliance



\*Cyanosis compliant on request

## Colour Options



## Code

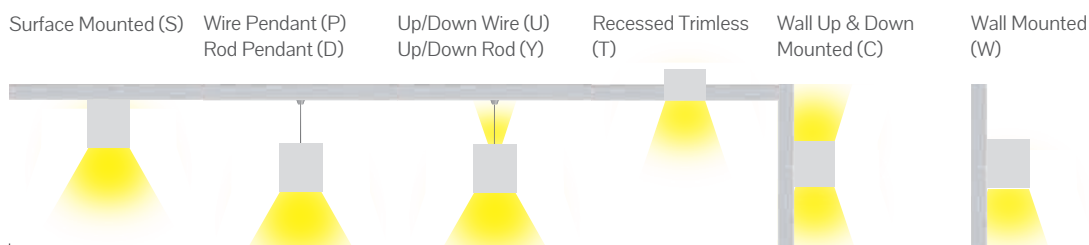
Example:

V100100-C1290300DDO10-2400

Product Code	Mounting	Power #	CRI	CCT	Optics	Driver	Finish	Length
V100100	S - Surface Mount	12 - 12 W/m (1272 lm/m) 16 - 16 W/m (1696 lm/m)	80 - CRI>80 90 - CRI>90	30 - 3000K 35 - 3500K 40 - 4000K 50 - 5000K	OD - Opal AS - Asymmetric	DO - Non-Dim DA - Dali-Dim SW - Switch-Dim CA - Casambi T2 - Tunable White	10 - Black 11 - White 75 - Grey 79 - Anodised CU - Custom	- xxxx mm
Optional	T - Trimless Recessed	20 - 20 W/m (2120 lm/m) 24 - 24 W/m (2544 lm/m)						
V100100IP	W - Wall Mounted C - Wall Up and Down P/D - Pendant U/Y - Pendant Up and Down	28 - 28 W/m (2968 lm/m) 32 - 32 W/m (3392 lm/m) 36 - 36 W/m (3816 lm/m) 40 - 40 W/m (4240 lm/m) 44 - 44 W/m (4664 lm/m) 48 - 48 W/m (5088 lm/m)						

# Luminous flux figures based on Opal, 4000K, CRI>90 version

## Mounting



## Dimensions

