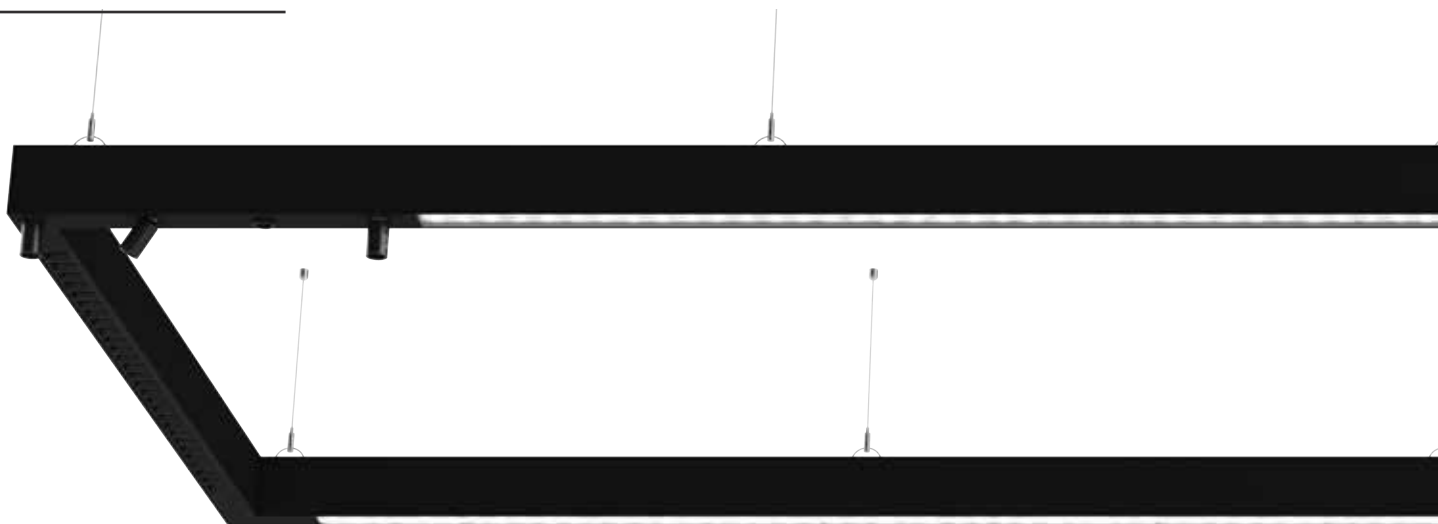


VEKTA V60100



Key Features

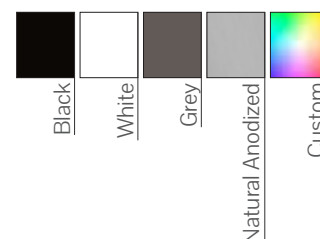
- Complies with relevant Australian Standards
- Screwless end caps (On Request)
- Emergency Options available (On Request)
- Provided shop drawings
- Welded joints (On Request)
- Plug and play
- Australian manufactured
- IP55 (Only On Diffused Optics On Request)

Compliance



*Cyanosis compliant on request

Colour Options



Code

Example:

V60100-S1290300DDO10-2400

Product Code	Mounting	Power #	CRI	CCT	Optics	Driver	Finish	Length
V60100	S - Surface Mount	12 - 12 W/m (1008 lm/m)	80 - CRI>80	30 - 3000K	OD - Opal##	DO - Non-Dim	10 - Black	- xxxx mm
optional	T - Trimless Recessed	16 - 16 W/m (1344 lm/m)	90 - CRI>90	35 - 3500K	Lx - Linear Lens	DA - Dali-Dim	11 - White	
		20 - 20 W/m (1680 lm/m)		40 - 4000K	Bx - Black Louvered ##	SW - Switch-Dim	75 - Grey	
V60100IP	W - Wall Up and Down	24 - 24 W/m (2016 lm/m)		50 - 5000K	Wx - White Louvered ##	CA - Casambi	79 - Anodised	
	C - Wall Up and Down	28 - 28 W/m (2352 lm/m)		TW - 2700-6500K	TR - Track	T2 - Tunable White	CU - Custom	
	P/D - Pendant	32 - 32 W/m (2688 lm/m)			MS - Mini Spot			
	U/Y - Pendant Up and Down	36 - 36 W/m (3024 lm/m)						
		40 - 40 W/m (3360 lm/m)						
		44 - 44 W/m (3696 lm/m)						
		48 - 48 W/m (4032 lm/m)						

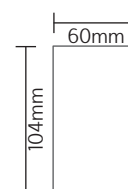
Luminous flux figures based on Opal, 4000K, CRI>90 version ## Code needs to be selected from a variant from the optics section

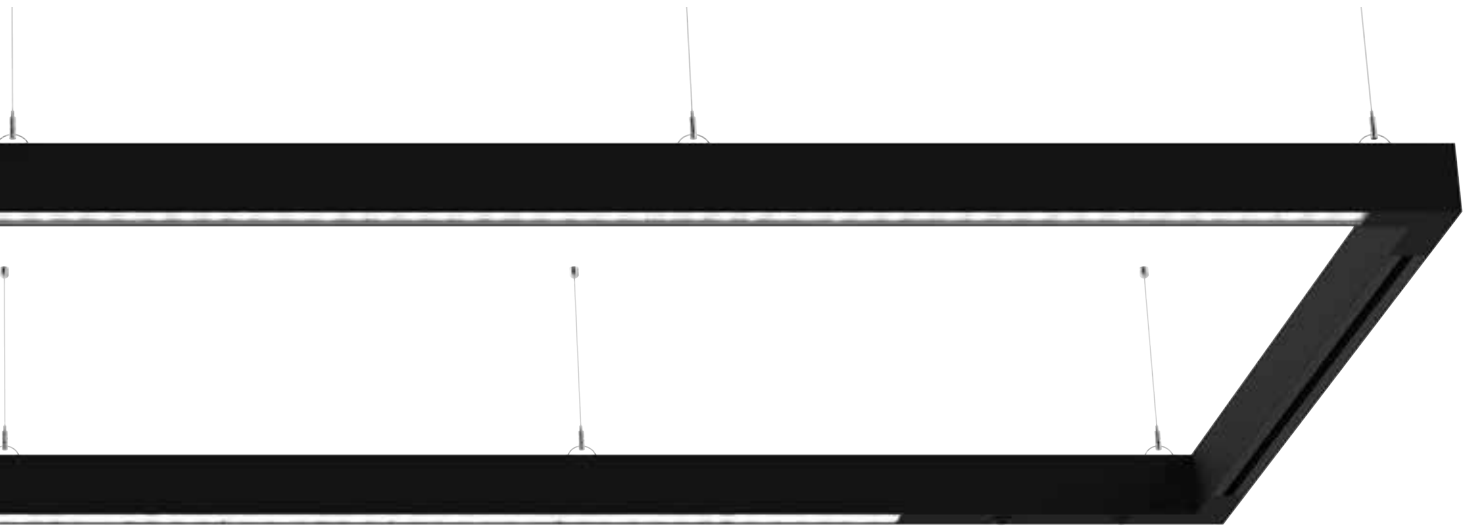
Mounting

Surface Mounted (S) Wire Pendant (P) Rod Pendant (D) Up/Down Wire (U) Up/Down Rod (Y) Recessed Trimless (T) Wall Up & Down Mounted (C) Wall Mounted (W)



Dimensions





Optics

Louvers



B8 - Black Wide 80°
 B5 - Black Medium 50°
 B3 - Black Narrow 35°
 BO - Black Oval 25 + 70°
 BA - Black Asymmetric
 W8 - White Wide 80°
 W5 - White Medium 50°
 W3 - White Narrow 35°
 WO - White Oval 25 + 70°
 WA - White Asymmetric

Linear Lenses



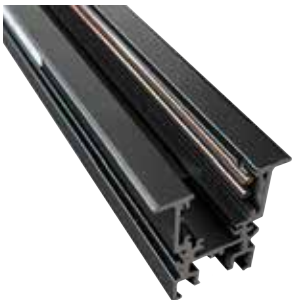
L6 - Linear Lens 60°
 L9 - Linear Lens 90°
 LO - Linear Oval 35° x 70°
 LA - Linear Asymmetric
 LD - Linear Double Asymmetric

Opal Diffusers



OD - Opal Diffuser
 CD - Clear High Impact Diffuser (IK06)
 HD - High Impact Opal Diffuser (IK06)

Track



TR - Track

Mini Spots



MS - Mini Spot